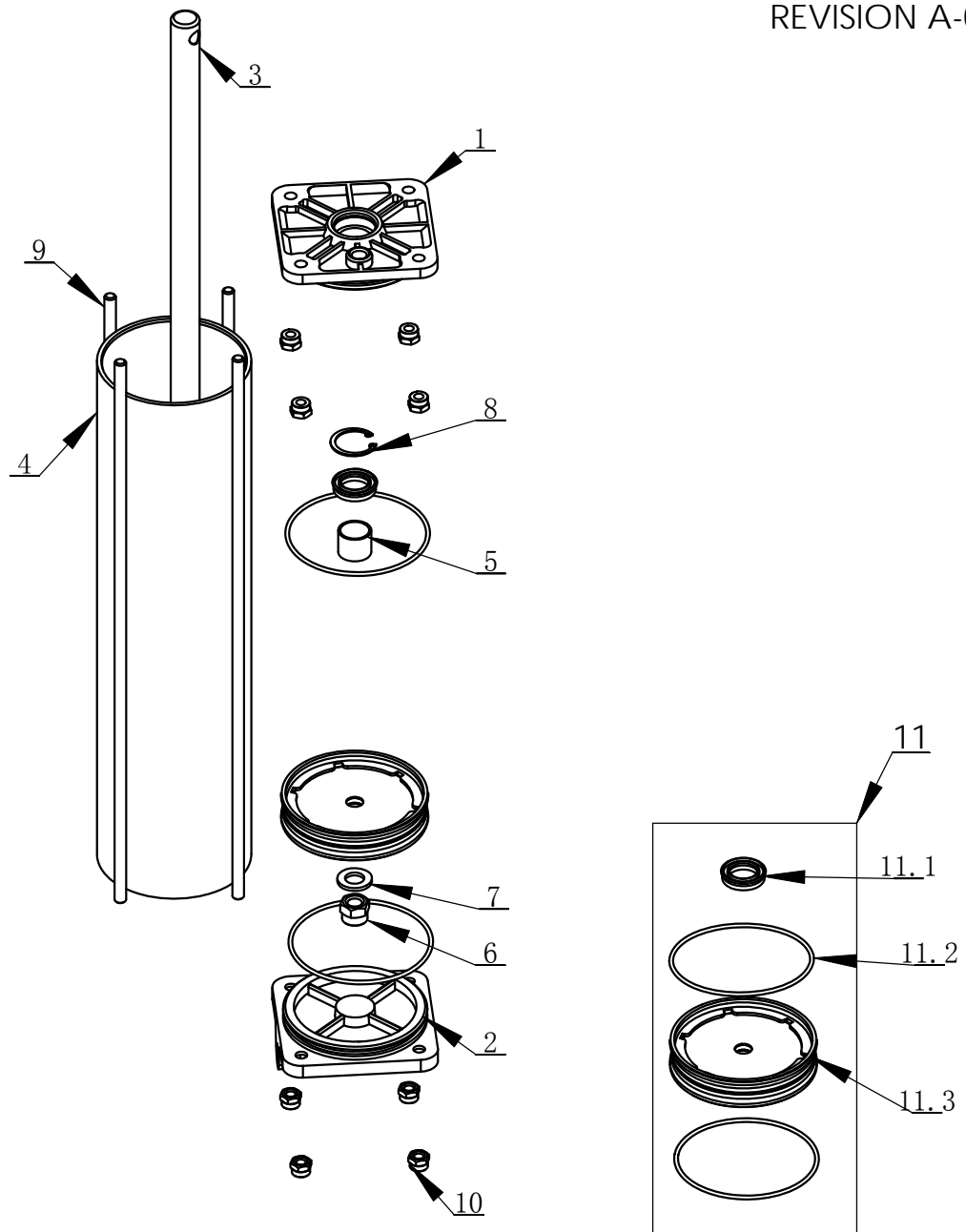


ITEM	PART. NO	DESCRIPTION	QT. Y
1	H-10-1000003	PROTECTIVE COVER	1
2	H-10-1000004	GUIDE RAIL	1
3	H-10-1000002	SHAFT CONNECTOR	1
4	H-10-1000006	PRESS BLOCK	1
5	H-10-1000020	HANDLE VALVE COVER	1
6	H-10-1500000	LIFTING CYLINDER ASSEMBLY	1
7	H-10-1000005	WASHER	1
8	C-54-1300011	HANDLE COVER	1
9	H-10-1000011	TURNTABLE	1
10	H-10-1000008	ROUND COVER	2
11	H-10-1000018	SUPPORTING SHAFT	1
12	H-10-1000017	WASHER	1
13	H-10-1000013	U-STEEL	1
14	H-10-1000007	WASHER	1
15	H-10-1000015	FIXTURE PLATE	1
16	H-10-1000012	CYLINDER COVER PLATE	1
17	H-21-1100000	SUPPORT ARM	1
18	H-10-1000014	BRACKET	1
19	H-10-1900000	TOOL BOX ASSY	1
20	H-30-1200000	BEAD LIFTING ARM	1
21	H-30-1000001实验	MOVABLE HOLDER	1
22	4H230-06A	CONTROL VALVE	1
23	H-12-1000003	SILENCER RING	1
24	H-12-1000001	FELT WASHER	1
25	H-12-0000002	PROTECTION RING	1
26	GB70. 1-M10×50	INNER HEXA CYLINDRICAL SCREW	3
27	GB70. 1-M8×70	INNER HEXA CYLINDRICAL SCREW	6
28	GB70. 1-M4×30	INNER HEXA CYLINDRICAL SCREW	3
29	GB70- M5×10	INNER HEXA CYLINDRICAL SCREW	6
30	GB70. 1-M10×25	INNER HEXA CYLINDRICAL SCREW	4
31	GB70. 1-M6×50	INNER HEXA CYLINDRICAL SCREW	2
32	GB93-10	STANDARD SPRING WASHER	7
33	GB70. 1-M10×20	INNER HEXA CYLINDRICAL SCREW	5
34	GB95-4	FLAT WASHER	3
35	GB70. 1-M4×12	INNER HEXA CYLINDRICAL SCREW	3
36	H-30-1300000	MAIN BODY BRACKET	1
37	H-10-1000016	GUIDE RAIL INLAY	4
38	GB95-10	FLAT WASHER	8
39	GB889. 1-M10	1-TYPE PREVAILING TORQUE TYPE HEXAGON LOCK NUT	6
40	GB95-5	FLAT WASHER	6
41	GB894. 1-12	SHAFT ELATIC BIG RETAINING RING A-TYPE	2
42	GB894. 2-25	SHAFT ELATIC RETAINING RING B-TYPE	1
43	GB96. 1-10	LARGE WASHER A GRADE	1
44	FSK 01	PLASTIC PARTICLE SILENCER	2
45	FPL 6-01	MALE ELBOW	5
46	Φ6X4PU A	PU HOSE A Φ6X4	1
47	H-30-1000005	MOVABLE SHAFT	1
48	H-30-1000003	TIRE PRESSING ROLLER	1
49	H-30-1000004	CONE ROLLER WASHER	1
50	H-30-1000006	WASHER	1
51	GB79-M10×20	INNER HEXA CYLINDRICAL TERMINUS SET SCREW	4
52	H-30-1000008	PAD PLATE	1
53	H-30-1000007	BOTTOM FLAT PLATE	1
54	GB5782-M10×130	HEXANGULAR BOLT	4
55	GB77-M8×20	INNER HEXA FLAT TERMINUS SET SCREW	9
56	GB6172. 1-M8	HEXANGULAR THIN NUT	9
57	Φ6X4 PU B	PU HOSE B Φ6X4	1
58	Φ6X4 PU C	PU HOSE C Φ6X4	1
59	H-24-1100000	ROTATION ARM	1
60	H-24-1000001	PRESSURE SCREW	1
61	JB3717. 22-85 M10-20	HANDLE	1

H-10-1500000

REVISION A-01



ITEM	PART. No	DESCRIPTION.	QT. Y
1	H-10-1500002	CYLINDER FRONT COVER	1
2	H-10-1500005	CYLINDER BEAR COVER	1
3	H-10-1500004	PISTON ROD	1
4	H-10-1500003	CYLINDER	1
5	JH1 2020	BEARING-SLIDE	1
6	GB889. 1-M12	1- TYPE PREVAILING TORQUE TYPE HEXAGON LOCK NUT	1
7	GB95-12	FLAT WASHER	1
8	GB893. 1-30	ELASTIC RETAINING RING A-TYPE	1
9	H-10-1500006	BOLT	4
10	GB889. 1-M8	1-TYPE PREVAILING TORQUE TYPE HEXAGON LOCK NUT	8
11	H-10-1510000	英文名称	1
11. 1	CT-Y-0160007	SEAL-ROD, CYLNDR	1
11. 2	GB3452. 1-95×2. 65-G	HYDRAULIC-PNEUMATIC RUBBER O-RING G TYPE	2
11. 3	H-10-1500001	PISTON	1